

Age Group	Number of People
20-30	65
30-40	110
40-50	63
50-60	53
60-70	30
70-80	2

20-30	20,1%
30-40	34,0%
40-50	19,5%
50-60	16,4%
60-70	9,4%
70-80	0,6%

Profession	Number of Respondents
Physician	260
Specialized nurse/technician	40
Medical student	30
Medical industry	0

Physician	77,7%
Specialized nurse/technician	12,6%
Medical student	9,4%
Medical industry	0,3%

Rating	Number of Responses
1 (poor/no)	0
2	0
3	15
4	140
5 (excellent/yes)	175

poor/no I	0,0%
2	0,3%
3	4,8%
4	42,5%
5 excellent/yes	52,4%

Rating	Number of Responses
1 (poor/no)	5
2	5
3	35
4	115
5 (excellent/yes)	175

poor/no I	0,0%
2	1,5%
3	10,2%
4	34,9%
5 excellent/yes	53,3%

Rating	Number of Responses
1 (poor/no)	0
2	0
3	15
4	128
5 (5 excellent/yes)	185

poor/no I	0,0%
2	0,3%
3	4,5%
4	38,9%
5 excellent/yes	56,3%

Rating	Number of Responses
1 (poor/no)	0
2	5
3	20
4	120
5 (excellent/yes)	185

poor/no I	0,0%
2	1,2%
3	6,0%
4	35,6%
5 excellent/yes	57,1%

Rating	Number of Responses
1 (poor/no)	2
2	3
3	35
4	115
5 (excellent/yes)	175

poor/no I	0,0%
2	1,2%
3	10,7%
4	34,9%
5 excellent/yes	53,2%

Rating	Number of Responses
1 (poor/no)	2
2	5
3	30
4	100
5 (excellent/yes)	170

poor/no I	0,3%
2	1,0%
3	10,1%
4	33,6%
5 excellent/yes	55,0%

Rating	Number of Responses
1 (poor/no)	2
2	15
3	18
4	58
5 (excellent/yes)	150

poor/no I	0,4%
2	0,9%
3	7,0%
4	25,3%
5 excellent/yes	66,4%

Rating	Number of Responses
1 (poor/no)	2
2	5
3	20
4	60
5 (excellent/yes)	108

poor/no	1,0%
2	2,6%
3	10,8%
4	30,4%
5 excellent/yes	55,2%

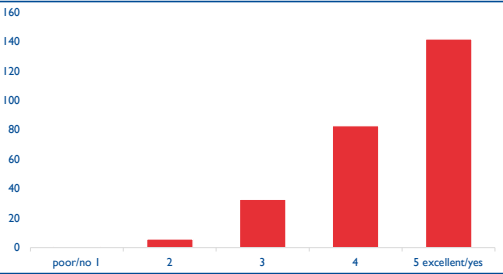
Rating	Percentage
1 (poor/no)	~3%
2	~4%
3	~11%
4	~62%
5 (excellent/yes)	~90%

poor/no I	1,7%
2	2,9%
3	6,9%
4	36,0%
5 excellent/yes	52,6%

Rating	Number of Responses
1	3
2	1
3	6
4	43
5	69

poor/no	3,2%
2	1,6%
3	5,6%
4	34,1%
5 excellent/yes	55,6%

The speakers corner had significant educational value

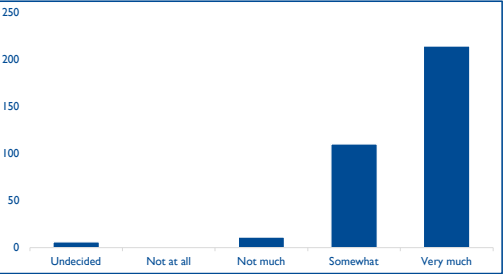


84,9%

% Good / Excellent (score 4/5 or 5/5)

poor/no 1	0,4%
2	2,3%
3	12,5%
4	31,3%
5 excellent/yes	53,6%

Will the information you learned be implemented in your practice?

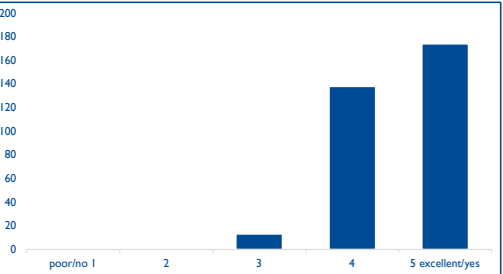


95,0%

% Somewhat/Very much

Undecided	1,8%
Not at all	0,0%
Not much	3,2%
Somewhat	32,3%
Very much	62,8%

The quality of the speakers was

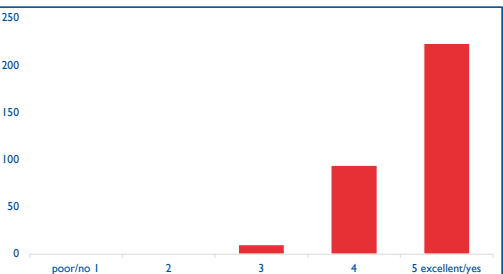


95,7%

% Good / Excellent (score 4/5 or 5/5)

poor/no 1	0,0%
2	0,3%
3	4,0%
4	42,3%
5 excellent/yes	53,4%

The EVC meeting was well organized

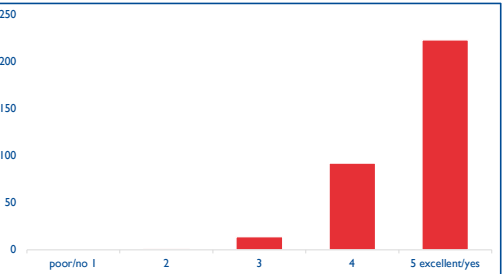


96,9%

% Good / Excellent (score 4/5 or 5/5)

poor/no 1	0,0%
2	0,0%
3	3,1%
4	28,7%
5 excellent/yes	68,2%

I recommend EVC as an important training and education meeting

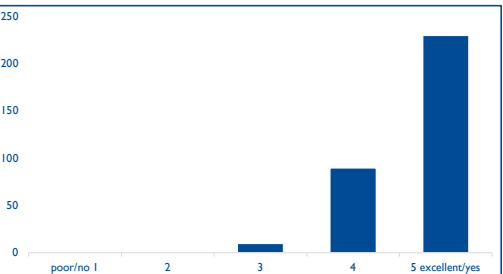


95,5%

% Good / Excellent (score 4/5 or 5/5)

poor/no 1	0,0%
2	0,3%
3	4,2%
4	27,9%
5 excellent/yes	67,6%

The location (venue) of EVC was appropriate for the congress

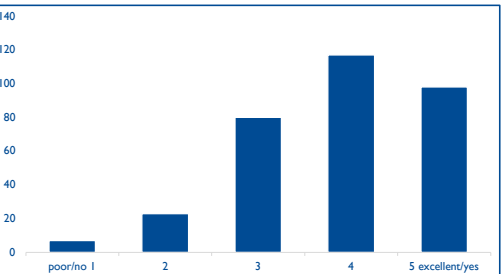


96,7%

% Good / Excellent (score 4/5 or 5/5)

poor/no 1	0,3%
2	0,0%
3	3,0%
4	27,2%
5 excellent/yes	69,5%

The quality of the catering was

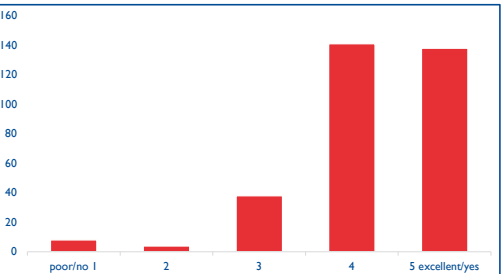


66,2%

% Good / Excellent (score 4/5 or 5/5)

poor/no 1	2,2%
2	7,1%
3	24,6%
4	36,0%
5 excellent/yes	30,2%

The set-up of the congress App:

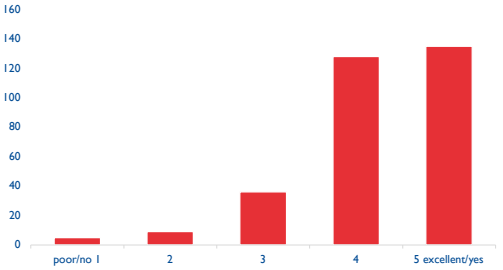


84,8%

% Good / Excellent (score 4/5 or 5/5)

poor/no 1	2,4%
2	1,2%
3	11,6%
4	42,9%
5 excellent/yes	41,9%

Was the app user-friendly?

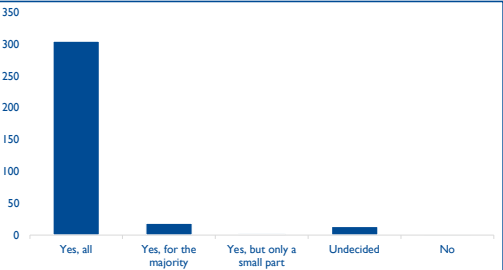


84,0%

% Good / Excellent (score 4/5 or 5/5)

poor/no 1	1,6%
2	2,9%
3	11,5%
4	40,9%
5 excellent/yes	43,1%

Did all the faculty members provide their potential conflict of interest declaration with the sponsor(s) as a second slide of their presentation?

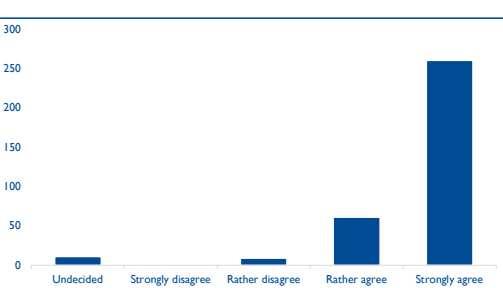


95,0%

% Yes

Yes, all	89,4%
Yes, for the majority	5,6%
Yes, but only a small part	0,6%
Undecided	4,1%
No	0,3%

Do you agree that the information was overall free of commercial and other bias?

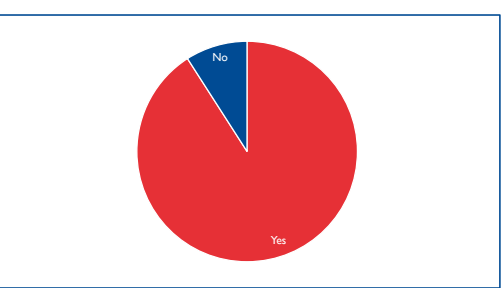


94,1%

% Rather agree / Strongly agree

Undecided	3,2%
Strongly disagree	0,0%
Rather disagree	2,6%
Rather agree	17,9%
Strongly agree	76,2%

Are you planning to attend EVC 2026 from 8-10 March ?



90,9%

% Yes

Yes	90,9%
No	9,1%